



Wrendale  
DESIGNS

by Hannah Dale

UK Autumn / Winter  
2024 SUPPLEMENT



PROUD TO HAVE BEEN  
awarded A KING'S AWARD  
FOR international trade

## A message from Hannah...

The team and I have been working incredibly hard to bring you lots of beautiful new designs and exciting new products. The re-imagined cross body bag collection looks fabulous and we are working on lots of new extensions to this range. Of course, it goes without saying that the new plush additions have us all very excited here at HQ - my personal favourite is Winnie the elephant - I hope you love her too.



We've also been working hard at Wild Wendale - don't forget to follow our social media pages to get regular updates on how the beavers are getting on...

Love, Hannah,  
Jackie and  
the Wendale team

# CONTENTS



WILD WRENDALE	4	CHILDREN'S SOCKS	18
COUNTRY SET CARDS	6	MEN'S SOCKS	19
OCCASION CARDS	7	FOLDABLE SHOPPING BAGS	20
BIRTHDAY CARD ORGANISER	8	KEYRINGS	22
WEEKLY PLANNER	9	COMPACT MIRRORS	23
GIFT BOXED PENS	9	PLUSH	24
CANVAS PRINTS	11	JUNIOR PLUSH	27
EYE MASKS	12	LIP BALM TINS	28
HOT WATER BOTTLES	14	NAIL FILE SETS	29
CROSS BODY BAGS	15	GIFT BAGS	31
CARD HOLDERS	17	USEFUL INFORMATION	32

## SUSTAINABILITY

As part of our commitment to sustainability, you will notice that we are **eliminating single use plastic packaging** from our cards, stationery and giftware going forward.

Please bear with us as we phase out the older types of packaging in favour of newer and more **environmentally friendly** methods that will still ensure that our products arrive to you in perfect condition.

*Want to see our full catalogue?*



Scan the QR code to view our full 2024 Spring/Summer range.

## GET INVOLVED...



### SHARE YOUR PHOTOS

Tag us using @wrendaledesigns



### WANT TO USE OUR IMAGES?

Email [marketing@wrendaledesigns.co.uk](mailto:marketing@wrendaledesigns.co.uk) for access to our images

These handy symbols are dotted throughout our catalogue to highlight key facts about our products.





# Wild WRENDALE

## About Wild Wrendale...

In 2019 Jack and I made the decision to cease commercial food production on our arable farm in Lincolnshire. The land is low lying, standing wet for much of the winter and baking hard in the summer. Despite our best efforts we struggled to farm profitably and felt that the unproductive soils could be put to better use for the benefit of nature.



## Our Vision

To allow nature to return to our 340 acre farm in Lincolnshire, creating habitats by restoring processes to the point that nature will be able to take care of itself. We aim to create a haven for native flora and fauna while providing a space for people to reconnect with nature.

## The story so far...

### Tree Planting

Although natural regeneration of habitat on the farm is our primary goal, we made the decision to plant a mixed native woodland consisting of 27,000 trees around the perimeter of the farm in order to give a head start and to create a buffer zone between our farm and our neighbours who were concerned about the spread of plant seeds from the farm.

### Wetland Creation

The hydrology of our farm has been drastically altered by the intervention of humans and one of our key priorities is to restore a more natural situation. Our first step was to excavate a wetland in one of the lowest areas of the farm and let nature take its course!

### Biodiversity

We are already seeing some huge increases in biodiversity on the farm in the short space of time that we have ceased cultivating and use of pesticides. 83 species of bird have been recorded including 17 red listed species. In a single survey in Summer 2023, 23 species of butterfly and 18 species of Odonata were recorded. Further work is in the pipeline to record the change in biodiversity as the project progresses.





### Introduction of Beavers

In December 2023, we welcomed the first pair of beavers back to Lincolnshire since they were hunted to extinction over 400 years ago. Since then we have been observing their activities on a series of cameras set up around the farm. As they are nocturnal, most of the action has been at night but it has been thrilling to watch them as they set to work coppicing willow that grows at the margins of the pond and begin to build dams.

Beavers are a keystone species – the habitat that they shape through their activities is important to many other species from insects to birds, amphibians and mammals. We can't wait to see how the landscape is transformed as they get to work.



### Spread the word...

Since all of Hannah's work is inspired by the natural world, it feels very fitting for the success of Wrendale to enable Hannah and Jack to give back in this way. By shopping Wrendale, you are supporting a family-run business that is on a mission to support nature and we'd love for your customers to understand how their support makes an impact too...

NEW

### NEW countertop stand

We have refreshed our countertop display board so you can make your customers aware of the Wild Wrendale project.

### download our images



Scan the QR code to download 'Wild Wrendale' social media assets, designed for you to spread the news about Wild Wrendale.



A4COUNTERCARD-UK



NEW

# COUNTRY SET CARDS

Introducing 6 new designs to our Country Set collection. With broad appeal, the new designs are beautiful additions to our best-selling range.

Made in the UK. 150mm x 150mm. Printed on 350gsm sustainably sourced textured board from responsibly managed forests. Supplied unwrapped with a recycled kraft envelope.

Blank inside. Sold in multiples of six.

RRP £2.85 00119



CS250  
'Marsh Orchid'



CS249  
'Lazy Sunday'



CS248  
'The Botanist'



CS247  
'Paddy, Percy and Pedro'



CS246  
'Bold and Beautiful'



CS245  
'The Arborist'

All cards with an **F** are available as a mounted or framed print. Please refer to our full brochure for more information.



# OCCASION CARDS

NEW

Introducing 10 new designs to our occasion range featuring beautiful artwork covering a variety of occasions.

Made in the UK. 170mm x 138mm. Printed on 350gsm sustainably sourced textured board from responsibly managed forests. Supplied unwrapped with a recycled kraft envelope.

Blank inside. Sold in multiples of six.

RRP £2.85 00119



OC149  
'Round of  
a-paws'



OC148  
'Purrfect  
Birthday'



OC147  
'Special Friend'



OC146  
'Blooming  
Birthday'



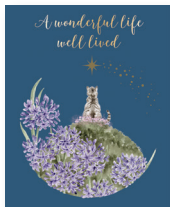
OC145  
'Shelter From  
The Storm'



OC144  
'Party Owl  
Night'



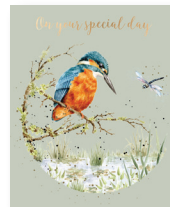
OC143  
'A Faithful  
Companion'



OC142  
'A Forever  
Friend'



OC141  
'My Deer'



OC140  
'Pond Dipping'

NEW

# BIRTHDAY CARD ORGANISER

This beautifully illustrated card box is perfect for planning ahead and keeping cards organised. With a unique design and featuring some of Hannah's most loved artwork, the box includes monthly card dividers with space on the back of each divider to write down birthdays, anniversaries and other special occasions. The box has plenty of room for storing any cards bought in advance.

212mm x 170mm x 100mm. Holds cards up to 145mm x 210mm. Outer: sturdy cardboard, dividers: card. Sustainably sourced from responsibly managed forests. Plastic free packaging. Sold in multiples of three.

RRP £18.00 00750

ORDER NOW FOR AUGUST DELIVERY



BCB001





# GIFT BOXED PENS

NEW

We have added two fabulous new designs to our pen collection. With colourful backgrounds and laser engraved branding, each pen writes with classic black ink and is of superb quality. Individually packaged in a printed tube and supplied with a branded countertop unit making them easy to display.

126mm x 10mm. Gift packaging sustainably sourced from responsibly managed forests.  
Sold in multiples of six per design in a countertop stand.

RRP £12.00 00500



PEN016  
'Garden Friends' Pen



PEN017  
'Farmyard Friends' Pen

## WEEKLY PLANNER

Our fantastic planner pad is perfect for jotting down weekly tasks, meal plans or organising shopping lists. With a magnet on the back, this pad can attach to a fridge or be used at a desk. The sheets are perforated so can be torn off and taken off the pad. The planners come complete with a pencil to ensure you always have something close by to jot things down.

295mm x 230mm. Hard backed with a large magnet on the back. Plastic free packaging with a paper band to keep the pads secure. Sold in multiples of six.

RRP £12.50 00521



PLAN003

*includes a pencil  
with silver  
foiled branding*



NEW

*the perfect addition*  
TO ANY HOME



# CANVAS PRINTS

NEW

Our canvas prints feature some of our most popular designs and are available in small (20cm) and medium (50cm).

Printed on archival standard polycotton canvas. Wipe clean only. Sold in multiples of three.

For a medium canvas add the prefix 'CANM-' and for a small canvas add 'CANS-'

SMALL

RRP £15.00 00625

MEDIUM

RRP £42.00 01750



CS239

S M



CS240

S M



CS241

S M



# EYE MASKS

Rest eyes in comfort with our beautifully illustrated super soft eye masks. With a large design on the front and a patterned reverse they can be worn either way. Finished with contrasting coloured piping and a soft elasticated band that makes sure the mask stays in place. The eye masks are all packaged in an open gift box to ensure customers can appreciate the beautiful quality and design while also making them a great gift.

210mm x 105mm x 30mm. Outer: 100% recycled polyester. Elastic band: 80% polyester, 20% elastic. Inner padding and lining: 100% recycled polyester. Plastic free gift box packaging made with sustainably sourced board from responsibly managed forests. Sold in multiples of six.

MADE FROM RECYCLED MATERIALS

RRP £12.00 00500



EM001  
'Garden Friends' Eye Mask



EM002  
'Woodlanders' Eye Mask



EM003  
'A Dog's Life' Eye Mask



NEW



NEW

# HOT WATER BOTTLES

Keep warm and cosy with our new hot water bottles. Available in three designs with a super soft cover featuring a large design on the front and a pattern on the reverse. Finished with contrasting piping, a handy hanging loop and a large wooden branded button.

185mm x 290mm x 40mm. Cover made from 100% recycled polyester.  
Bottle 100% natural rubber. Sold in multiples of three.

MADE FROM RECYCLED MATERIALS

RRP £16.00 006



HWB001  
'Garden Friends'  
Hot Water Bottle



HWB002  
'Woodlanders'  
Hot Water Bottle



HWB003  
'A Dog's Life'  
Hot Water Bottle



# CROSS BODY BAGS

NEW

Introducing our new cross body bags available in three beautiful designs. Featuring patterned artwork, a sturdy base and an adjustable strap. With a zip fastening, a front zipped pocket and pockets inside there is plenty of room for everyday essentials.

310mm x 270mm x 50mm. Made from 100% polyester.  
Brass zips and hardware. Sold in multiples of three.

RRP £35.00 01458

ORDER  
NOW FOR  
AUGUST  
DELIVERY



BGE005

'A Dog's Life'  
Cross Body Bag



BGE006

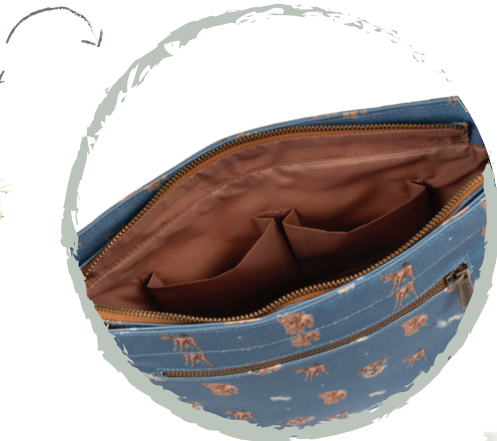
'Woodlanders'  
Cross Body Bag



BGE007

'Farmyard Friends'  
Cross Body Bag

*handy pockets  
inside for everyday  
essentials*



NEW





# CARD HOLDERS

NEW

Available in three designs our card holders are perfect for keeping coins and cards handy without the need for a large purse. Featuring a large design on the front, a pattern on the reverse and a zip across the top and down the side. These card holders perfectly match our new cross body bags.

130mm x 85mm x 10mm. Made from 100% polyester. Sold in multiples of three.

RRP £14.00 00583

ORDER  
NOW FOR  
AUGUST  
DELIVERY



COIN001  
'A Dog's Life' Card  
Holder/Coin Purse



COIN002  
'Woodlanders' Card  
Holder/Coin Purse



COIN003  
'Farmyard Friends' Card  
Holder/Coin Purse



NEW

# CHILDREN'S SOCKS

We are thrilled to be introducing children's socks to our collection, available in six gorgeous designs in two sizes. Made from soft materials with bright colours and beautiful artwork.

Each pair of socks comes with an illustrated gift bag making them a great gift.

Children's sizes 6-8.5 and 9-12. Made from viscose derived from bamboo with nylon stitching. Packaged on a kraft hanger made from sustainably sourced board from responsibly managed forests. Sold in multiples of three.

RRP £5.00 00208



'Born to be Wild'

Size 6-8.5 SOCKC001



Size 9-12 SOCKC002



'Rosie'

Size 6-8.5 SOCKC003



Size 9-12 SOCKC004



'Gentle Jack'

Size 6-8.5 SOCKC005



Size 9-12 SOCKC006



'Little One'

Size 6-8.5 SOCKC007



Size 9-12 SOCKC008



'Ladybird'

Size 6-8.5 SOCKC009



Size 9-12 SOCKC010



'Grinny Pig'

Size 6-8.5 SOCKC011



Size 9-12 SOCKC012



SBAG

Socks Gift Bag



# MEN'S SOCKS

NEW

We have added three new designs to our men's sock collection featuring masculine artwork, colours and patterns. Each pair of socks comes with a complementary gift bag.

One Size (Men's 7-11). Made from viscose derived from bamboo with nylon stitching. Packaged on a kraft hanger made from sustainably sourced board from responsibly managed forests. Sold in multiples of three.

RRP £8.50 00354



SOCKM007  
'Guard Duck'



SOCKM008  
'The Hare'



SOCKM009  
'The Riverbank Kingfisher'

## SOCK SPINNER

We have developed a new floor standing spinner that can display our women's, children's and men's socks together.



RRP VALUE £2412  
FULLY STOCKED  
TRADE £1004.04

The spinner holds;

- Women's x 30 designs
- Children's x 12 designs
- Men's x 12 designs.

This spinner is FREE  
when filled with the above.

1830mm x 550mm x 550mm

SPINNER: SOCKSPINNER



TOPPER: SPT017



NEW

# FOLDABLE SHOPPING BAGS

Available in six of our most popular designs, our refreshed foldable shopping bags are now made from 100% recycled polyester and fold into a smaller more compact size. Finished with a wren stud popper closure and a handy hanging loop. Stylish and practical these bags are a sustainable alternative to plastic carrier bags.

430mm x 380mm unfolded. 160mm x 110mm folded.  
Made from 100% recycled polyester. Sold in multiples of six.

MADE FROM RECYCLED MATERIALS

RRP £9.00 00375



BGF018  
'Born to be Wild'



BGF017  
'Oops a Daisy'



BGF016  
'Feline Friends'



BGF015  
'A Dog's Life'



BGF014  
'Woodlanders'



BGF013  
'Garden Friends'



NEW



*wren stud  
popper closure  
and a handy  
hanging loop*



# KEYRINGS

Our fabulous keyrings feature a selection of our latest best-selling designs with a lovely coloured background.

80mm x 40mm x 5mm. Made from zinc alloy metal with a resin domed finish on the front and a laser etched logo on the reverse. Plastic free packaging. Sold in multiples of six.

RRP £5.00 00208



KR029  
'Mooo'



KR030  
'Feline Good'



KR031  
'Little One'



KR032  
'Love and Hedgehugs'



KR033  
'Just Bee-Cause'



KR034  
'Treetops'



KR035  
'Mushroom in my Heart'



KR036  
'Golden Hour'



# COMPACT MIRRORS

NEW

We have added three new designs to our gorgeous compact mirror collection, handy for life on-the-go and the ultimate handbag essential. Each mirror has one magnifying mirror and a soft, smooth feel outer with a different design on the reverse. Packaged in an illustrated gift box.

Mirror: 70mm square. Box 100mm x 16mm. Outer: Vegan Leather.  
Inner: Glass. Sold in multiples of three.

RRP £10.00 00417



MR016  
'Head Clover Heels'



MR017  
'Daisy Coo'



We have developed a countertop stand to make the mirrors easy to display. The countertop stand is FREE of charge when ordering 9 x 3 mirrors.

335mm x 310mm x 250mm

STA007 (display stand only)



MR018  
'Wisteria Wishes'

FULLY STOCKED RRP  
VALUE £270 11259



We are thrilled to be introducing two new characters to our plush character collection, Winnie the elephant and Esmeralda the cat, inspired by original artwork and made from high quality soft tactile materials.

Featuring an embroidered wren on the foot and a gift tag with insightful information about the character. Suitable from birth. Polyester fibre stuffing. Plastic free packaging.  
Sold in multiples of three.



RRP £38.00 01583

## ESMERALDA

*inspired by 'Ladybird'*

Esmeralda is a sophisticated feline with a flair for the dramatic. She spends her days lounging in sunbeams and has perfected the art of looking regal while chasing her own tail. Although she appreciates the finer things in life, Esmeralda's guilty pleasure is a cardboard box and she can't resist squeezing into any that she comes across, no matter how small. She loves a cream tea and her idea of a perfect Sunday afternoon would be a walk in the countryside followed by a jam and clotted cream scone in a cosy tea room.

PLUSH014

270mm x 140mm x  
200mm



## WINNIE

*inspired by 'Baby'*

Kind and gentle, Winnie is loved by all who meet her. A daydreamer, she loves to while away lazy afternoons with her trunk in a book. Fiercely loyal, she supports her friends through thick and thin and is always the first one they call in a crisis. Winnie was a talented ballerina in her youth but an unfortunate trunk tripping incident involving the prima ballerina cut her promising career short. Always creative, she loves to crochet and has recently taken up yarn bombing – decorating everyday objects with colourful crocheted creations.



PLUSH015

250mm x 140mm x  
210mm





NEW

*your FAVOURITE Wrendale*  
CHARACTER *brought to life*



NEW



# JUNIOR PLUSH COLLECTION

NEW

Introducing Jack Junior and Beryl Junior, the smaller sized donkey and sheep plush characters. Made from high quality materials, featuring an embroidered wren on the foot and a gift tag with insightful information about the character.

Featuring an embroidered wren on the foot and a gift tag with insightful information about the character. Suitable from birth. Polyester fibre stuffing. Plastic free packaging. Sold in multiples of three.

RRP £30.00 01250



PLUSHM011  
270mm x 180mm  
x 120mm



## JACK JUNIOR

*inspired by 'Gentle Jack'*

Jack is a gentle soul whose kind and caring nature makes him popular with all who know him. He has a keen interest in geology and loves to look for interesting rock formations in his spare time. Jack enjoys wild camping and can think of nothing better than sleeping under the stars, telling ghost stories and toasting marshmallows over a camp fire. Always looking for a new challenge, Jack has dabbled in metal detecting and once found a paperclip shaped like a dinosaur.

## BERYL JUNIOR

*inspired by 'Woolly Jumper'*

Beryl loves to be outdoors and has recently taken up Nordic walking which keeps her busy most weekends. Known as a bit of a thrill-seeker, she loves white-water rafting and has always wanted to try her hoof at parkour. Highly sociable, Beryl was the founding member of her local 'knit and natter' group which once led a successful campaign to make socks for cold penguins. Beryl loves to bake and often raises eyebrows with her unusual flavour combinations.



PLUSHM012  
190mm x 150mm x  
140mm



# LIP BALM TINS

We have added six new designs to our collection of fragranced lip balms. Proudly 'Made in England' the lip balm comes in an illustrated tin with artwork on every surface. Once the lip balm has been used, the tin can be re-used for small trinkets. With a sweet scent of honey and vanilla, the lip balms are completely cruelty free and will moisturise and nourish lips. The tins can be displayed in our bespoke point of sale.

100% cruelty free. Honey and vanilla fragrance. Enriched with cocoa butter, mango seed butter and jojoba oil. 45mm x 45mm x 15mm. Sold in multiples of six.

RRP £5.00 00208



LIP013  
'Daisy Coo'



LIP014  
'Pottering About'



LIP015  
'Stay Clever Little Fox'



LIP016  
'Wisteria Wishes'



LIP017  
'Head Clover Heels'



LIP018  
'Not a Daisy Goes By'



STA017

Lip Tin Countertop Display

225mm x 330mm x 310mm

Holds 72 lip tins  
6 units x 12 designs.

FULLY STOCKED  
RRP VALUE £360 14976



*each lip balm is...*

- Enriched with cocoa butter, mango seed butter and jojoba oil
- 100% cruelty free
- Honey and Vanilla Fragrance
- Moisturising and Nourishing



# NAIL FILE SETS

NEW

Our new nail file sets include 2 nail files in different colours in a patterned cardboard pouch.

190mm x 50mm x 5mm. 2 nail files per set. Plastic free packaging.  
Printed on 300gsm sustainably sourced textured board. Sold in multiples of six.

RRP £5.00 00208



NAIL007  
'A Dog's Life'



NAIL008  
'Feline Friends'



NEW



# GIFT BAGS

NEW

Introducing a new colour way to our gift bag collection available in small, medium and large. Each bag has a printed gift tag and a contrasting grosgrain ribbon. The bags have a smooth finish and once the ribbon and rope handle have been removed, the bags are completely recyclable.

Small: 190mm x 150mm x 80mm, medium: 230mm x 180mm x 100mm, large: 300mm x 250mm x 115mm. Printed on sustainably sourced paper from responsibly managed forests. Main bag recyclable. Packaged plastic free. Sold in multiples of six.



**GB043**  
'Golden Hour'  
Large Gift Bag



**GB042**  
'Love and Hedgehugs'  
Medium Gift Bag



**GB041**  
'He's a Fun-Gi'  
Small Gift Bag



## SMALL

RRP £3.00 00125

## MEDIUM

RRP £4.00 00167

## LARGE

RRP £4.50 00188



# POINT OF SALE TOOLS

When it comes to styling your Wrendale display, we've done the work for you...

We have designed a selection of beautifully illustrated point of sale units to make showcasing your range as effortless as possible and to provide an easy and enjoyable shopping experience for your customers.

Developed to fit a variety of products in different shapes and sizes, our point of sale display tools feature some of Hannah's best-loved designs in vibrant colours to draw attention to our range.



## SPINNERS

The simplistic layout of our card spinners makes it easy for shoppers to browse, while our wonderfully engaging display units really stand out in a crowd. Whichever you choose, you can be sure our point of sale will complement your Wrendale selection and support your sales.

Please contact us for more information about the spinners...

## COUNTER TOP DISPLAY UNITS

We have a variety of point of sale units for our giftware products throughout the catalogue, as well as a stationery stand and Christmas stand which can be used for a variety of items...



STA014  
560mm x 540mm  
x 315mm



SPT001  
210mm x 300mm



STA015  
500mm x 540mm  
x 415mm





# MERCHANDISING

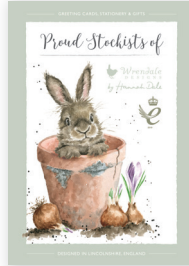
## MARKETING MATERIALS

We are pleased to offer the following merchandising tools free of charge to our customers. As well as our marketing bundles, we have a fabulous hanging sign to attract customers to your Wrendale displays. The hanging display signs measure 800mm x 400mm.



WDL-HPOS

Wrendale Designs Hanging POS



A2POSTERMB-UK

LARGE POSTER



A4COUNTERCARD-UK  
COUNTER DISPLAY BOARD



WSTICKER

WINDOW STICKER



## CHRISTMAS WITH WRENDALE

Our Christmas collection is ever-expanding, including greeting cards, planners, accessories, homeware and much more. Take a look at our full catalogue to view the complete Wrendale Christmas collection.



## ABOUT US

Wrendale Designs started life on a kitchen table in Melton Ross, Lincolnshire. From humble beginnings, it has become a globally recognised, **multi-award-winning brand** of best-selling giftware, well known for the characterful illustrations.

To find out more about us scan the **QR code** to view our welcome presentation.



*Scan to view!*



## OUR VISION

Wrendale aspires to be one of the **best giftware brands globally** and a household name across the world. We hope our customers, who form part of the wider Wrendale community, will love the brand not only for the products which are high quality, sustainably sourced, rich in unique detail and always deliver a smile, but also for the whole '**Wrendale experience**'. This encompasses all round excellence from creative marketing and beautiful packaging to world class customer service. We strive to be an industry leader in reducing our environmental footprint, adopting sustainable practices at all levels of the business. Our **commitment to nature** is evident in 'Wild Wrendale', a rewilding project that is restoring nature and pushing boundaries to bring back lost species and habitats. The success and sense of achievement is shared by an **exceptional team** who together form the core of the 'Wrendale Family', committed to delivering the vision and creating a happy and fulfilling environment.



# USEFUL INFORMATION



## IMAGE REQUESTS

We have an image bank available to our stockists which includes low resolution images ready for use on website and/or social media. To request this, please contact [marketing@wrendaledesigns.co.uk](mailto:marketing@wrendaledesigns.co.uk).



## ORDERS & DELIVERY...

We pride ourselves on our excellent customer service (as well as our lovely designs!) Please get in touch if there is anything we can help you with.

We offer carriage paid delivery on orders over £120 to UK mainland, over £180 to islands and highlands. Our website has a trade site, enabling you to place re-orders online. Alternatively you can contact the office or your local representative.

## GET IN TOUCH...

We'd love to hear your feedback...

e: [info@wrendaledesigns.co.uk](mailto:info@wrendaledesigns.co.uk)

t: 01652 680253

[www.wrendaledesigns.co.uk](http://www.wrendaledesigns.co.uk)

## FOLLOW OUR JOURNEY...



@WrendaleDesigns @WildWrendale

## COME AND MEET US...

**Spring Fair, Birmingham**

2nd - 5th February 2025

**Trendset, Munich, Germany**

6th - 8th July 2024

**Nordstil, Hamburg, Germany**

27th - 29th July 2024

**VEBO Fair, Naples, Italy**

27th - 30th September 2024

**Maison et Objet, Paris, France**

5th - 9th September 2024



*inspired by nature  
brought to life in  
watercolour*

